

# SWIVEL-HEEL CLAMP STRAPS

STRAP: 1018 STEEL, CARBURIZED-HARDENED, BLACK OXIDE FINISH  
SEE PAGES 50, 54, 180-183, 185-189, AND 193 FOR OTHER MATERIAL SPECIFICATIONS

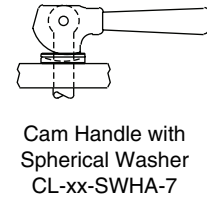
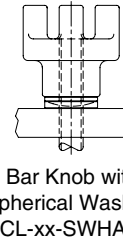
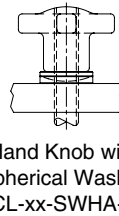
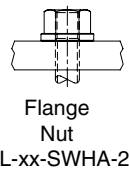
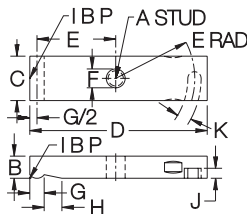


Steel

Clamp strap that swings out of the way for clear loading. Available for 1/4-20 (M6) to 3/4-10 (M20) stud sizes, each in several strap lengths. See below for complete clamp-strap assemblies using the straps shown above. Select any of the six nut/knob combinations shown by adding the appropriate suffix to the part number. Other Stud and Clamp Rest lengths are available (order pieces individually).

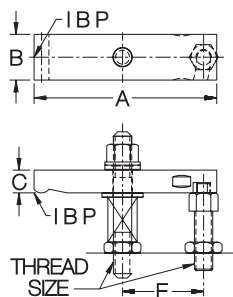
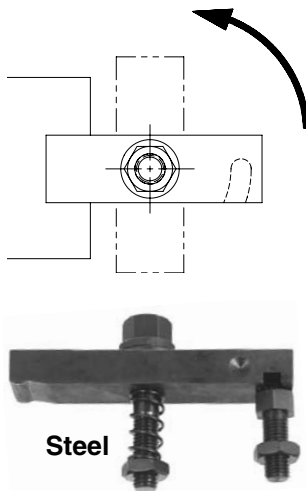
## STRAPS — STEEL

PART NO.	A	B	C	D	E	F	G	H	J	K
CL-125-CS	1/4-20 or M6	3/8	5/8	2	27/32	9/32	1/4	11/32	1/8	3/16
CL-127-CS				3	1-7/32					
CL-129-CS	3/8-16 or M10	1/2	1-1/8	4	1-23/32	27/64	13/32	1/2	9/32	3/8
CL-131-CS				5	2-7/32					
CL-134-CS				3-1/2	1-15/32					
CL-135-CS	1/2-13 or M12	5/8	1-1/4	4	1-23/32	17/32	13/32	1/2	9/32	3/8
CL-137-CS				5	2-7/32					
CL-139-CS				6	2-23/32					
CL-140-CS				4	1-5/8					
CL-142-CS	5/8-11 or M16	7/8	1-1/2	5	2-1/8	21/32	1/2	19/32	9/32	1/2
CL-144-CS				6	2-5/8					
CL-152-CS				6	2-5/8					
CL-154-CS	3/4-10 or M20	1	1-3/4	7	3-1/8	13/16	1/2	19/32	5/16	1/2
CL-156-CS				8	3-5/8					



## ASSEMBLIES — STEEL (USA)

PART NO.	THREAD SIZE	A	B	C	E	CLAMP STRAP	CLAMP REST	FLAT WASHER	STUD & SPRING
CL- 0-SWHA-x	1/4-20	2	5/8	3/8	27/32	CL-125-CS	CL-1-CR	CL-7-FW	CL-1/4-20x2.50-STUD CL- 5-SPG
CL- 2-SWHA-x	3/8-16	3	1-1/8	1/2	1-7/32	CL-127-CS	CL-2-CR	CL-1-FW	CL-3/8-16x3.00-STUD CL- 7-SPG
CL- 4-SWHA-x		4			1-23/32	CL-129-CS			
CL- 6-SWHA-x		5			2-7/32	CL-131-CS			
CL- 9-SWHA-x	1/2-13	3-1/2	1-1/4	5/8	1-15/32	CL-134-CS	CL-4-CR	CL-2-FW	CL-1/2-13x4.00-STUD CL- 9-SPG
CL-10-SWHA-x		4			1-23/32	CL-135-CS			
CL-12-SWHA-x		5			2-7/32	CL-137-CS			
CL-14-SWHA-x		6			2-23/32	CL-139-CS			
CL-19-SWHA-x	5/8-11	4	1-1/2	7/8	1-5/8	CL-140-CS	CL-6-CR	CL-3-FW	CL-5/8-11x4.50-STUD CL-11-SPG
CL-17-SWHA-x		5			2-1/8	CL-142-CS			
CL-15-SWHA-x		6			2-5/8	CL-144-CS			
CL-27-SWHA-x	3/4-10	6	1-3/4	1	2-5/8	CL-152-CS	CL-8-CR	CL-4-FW	CL-3/4-10x5.00-STUD CL-13-SPG
CL-29-SWHA-x		7			3-1/8	CL-154-CS			
CL-31-SWHA-x		8			3-5/8	CL-156-CS			



## ASSEMBLIES — STEEL (METRIC)

CLM- 0-SWHA-x	M6	2	5/8	3/8	27/32	CL-125-CS	CLM-1-CR	CL-7-FW	CLM-6x65-STUD CL- 5-SPG
CLM- 2-SWHA-x	M10	3	1-1/8	1/2	1-7/32	CL-127-CS	CLM-2-CR	CL-1-FW	CLM-10x80-STUD CL- 7-SPG
CLM- 4-SWHA-x		4			1-23/32	CL-129-CS			
CLM- 6-SWHA-x		5			2-7/32	CL-131-CS			
CLM- 9-SWHA-x	M12	3-1/2	1-1/4	5/8	1-15/32	CL-134-CS	CLM-4-CR	CL-2-FW	CLM-12x95-STUD CL- 9-SPG
CLM-10-SWHA-x		4			1-23/32	CL-135-CS			
CLM-12-SWHA-x		5			2-7/32	CL-137-CS			
CLM-14-SWHA-x		6			2-23/32	CL-139-CS			
CLM-19-SWHA-x	M16	4	1-1/2	7/8	1-5/8	CL-140-CS	CLM-5-CR	CL-3-FW	CLM-16x110-STUD CL-11-SPG
CLM-17-SWHA-x		5			2-1/8	CL-142-CS			
CLM-15-SWHA-x		6			2-5/8	CL-144-CS			
CLM-27-SWHA-x	M20	6	1-3/4	1	2-5/8	CL-152-CS	CLM-8-CR	CLM-10-FW	CLM-20x125-STUD CL-13-SPG
CLM-29-SWHA-x		7			3-1/8	CL-154-CS			
CLM-31-SWHA-x		8			3-5/8	CL-156-CS			

\* Available in thread sizes 3/8-16 and above (M10 and above in metric).



**MANUFACTURING CO.**  
4200 Carr Lane Ct., P.O. Box 191970  
St. Louis, Missouri 63119-7970 USA  
Phone: 314-647-6200, FAX: 314-647-5736  
Web Site: www.carrlane.com