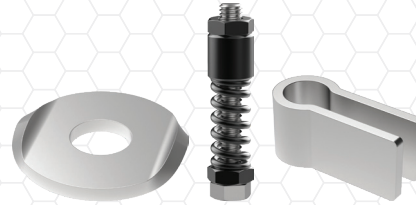


Carr Lane offers an industry-leading line of heavy-duty toggle clamps including horizontal-handle toggle clamps, vertical-handle toggle clamps, push/pull toggle clamps, toggle edge clamps, latch-action toggle clamps, toggle pliers, air-powered toggle clamps and a complete line of toggle clamp accessories.



Accessories

- Large assortment of toggle clamp accessories
- All Carr Lane Mfg. toggle clamp accessories are designed for use with CLM toggle clamps
- Including Clamping Spindles, Flanged Washers, Bolt Retainers and Mounting Brackets
- Two different types of bolt retainers and flanged washers

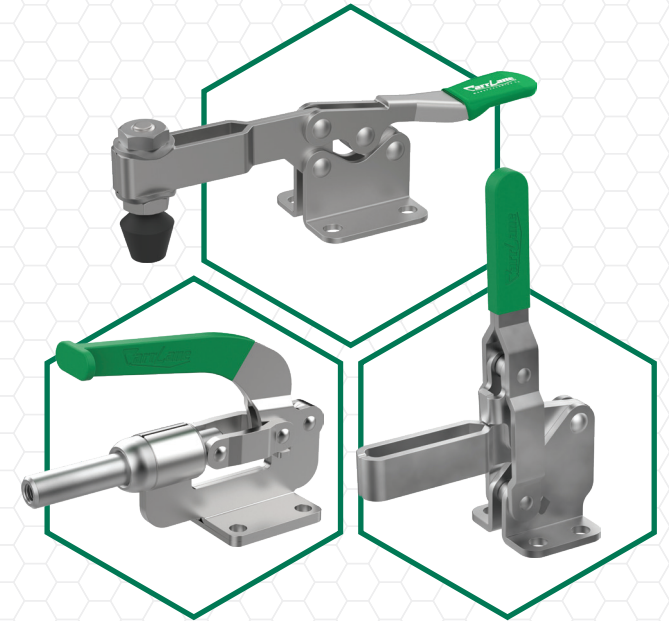


Have questions about our products? Contact us!

www.CarrLane.com
cs@carrlane.com
314.647.6200

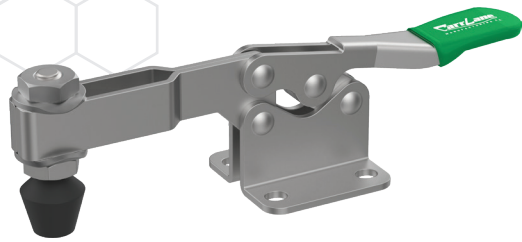
Follow Us!

-  Carr Lane Manufacturing Co.
-  Carr Lane Manufacturing Co.
-  @CarrLane
-  CarrLaneMfg



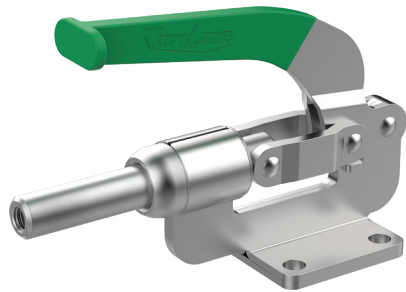
Toggle Clamps





Horizontal Handle

- Quick-acting hold-down clamps
- Handle locks in horizontal position
- Rotate the handle downward pivots the clamping arm downward and lock over center
- Available in Standard HTC Design, Low Arm and Extra-Wide Opening



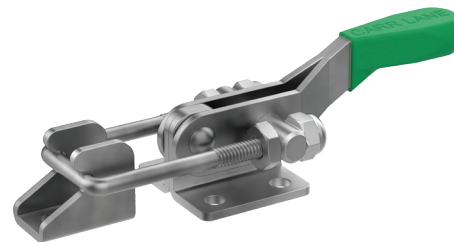
Push/Pull Clamps

- Sliding plunger provides a straight-line clamping action
- Toggle action moves and locks the plunger in either the push or pull direction
- The most rugged clamp Carr Lane Manufacturing offers, the CL-650-SPC provides a 16,000lb holding capacity
- Available in Standard SPC design, horizontal handle, PC design, threaded body and wagon brakes
- Varieties offer various features and holding capacities
- Wagon Brakes are available with glow-in-the-dark options



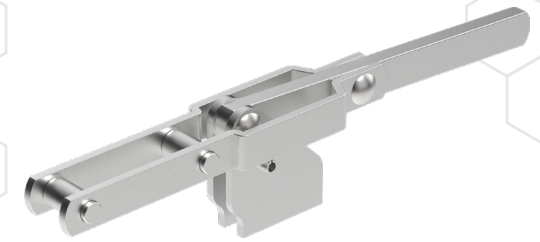
Vertical Handle

- Handle locks in a vertical position
- Rotate the handle upward to pivot the clamping arm downward and lock over center
- Standard and heavy-duty options capable of providing up to 5,000 lbs of clamping force
- Available in heavy-duty, automatically adjusting, angle arm and standard wide opening vertical toggle clamps



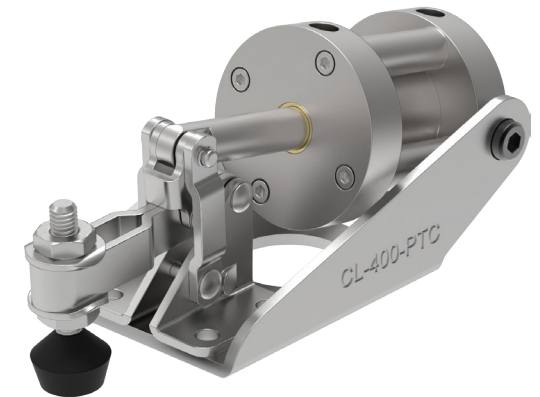
Latch Action

- Designed for applications where a straight pulling action is needed
- Varieties offer various features and holding capacities
- Available with adjustable U-Bolt, Right Angle Adjustable U-Bolt, Adjustable Hook and Fixed Length



Latch Clamp

- Latch clamp with a fixed reach for installation where no length adjustment is required
- Frequently used in rotational plastic molding, this clamp is made from stainless steel to better resist deformation, damage, and extend the life of the clamp in high-temperature environments
- 4" drawing movement
- 375 lbs holding capacity



Air-Powered Clamps

- Double-acting air cylinder
- Pneumatic version of our Toggle Clamps
- Toggle linkage provides high holding capacity and ensures positive mechanical locking even if air pressure fails