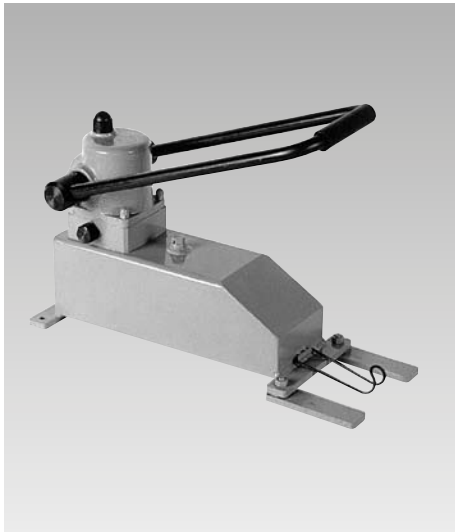
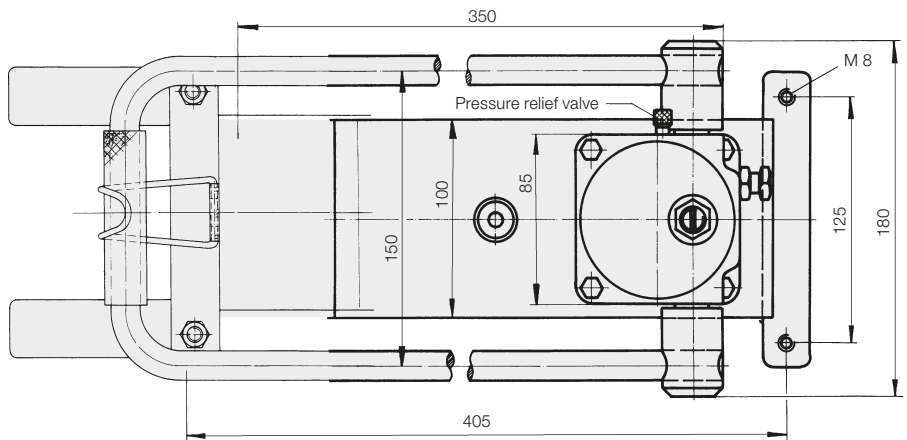
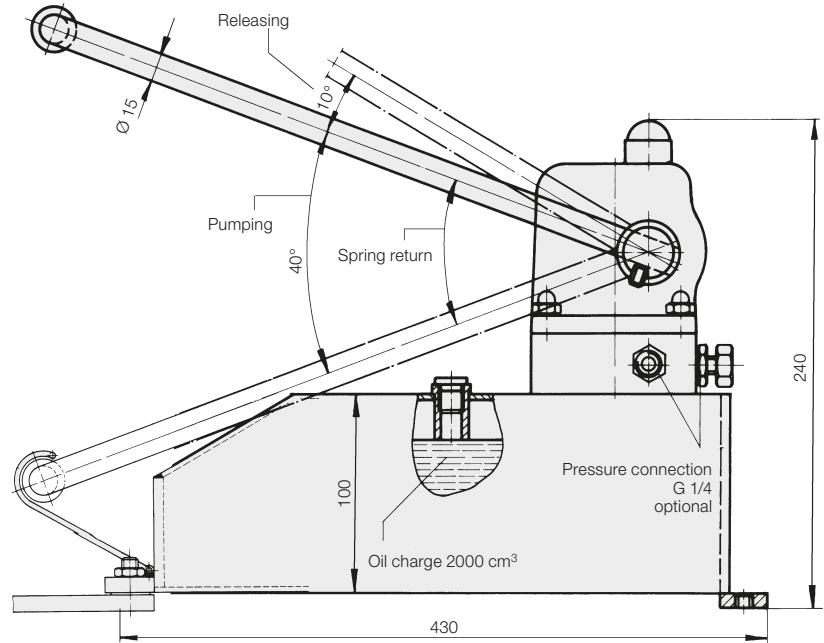




Two-Stage Hydraulic Pump
with automatic change-over from
low stage 60 bar to high stage 500 bar



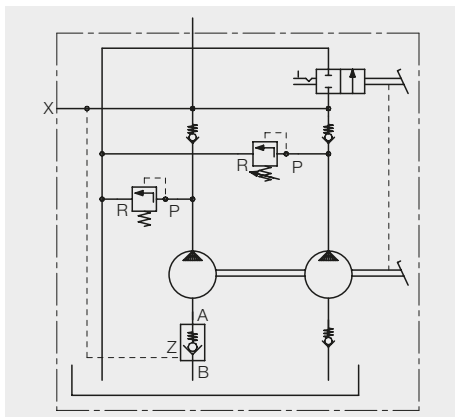
Two-stage pump, usable oil volume 1800 cm³
Part no. 8817-000



Description

The pump is designed to operate single-acting cylinders and is fitted with a differential piston. Changing from low pressure to high pressure is automatic. An externally adjustable pressure relief valve is standard equipment. Pumping as well as releasing is controlled by the same lever and can be done by hand or foot. The operating lever is held in the released position by a spring loaded detent. The operating lever can be held in the lowest position by a retaining clip, so that the device can be easily carried by hand.

Hydraulic circuit diagram



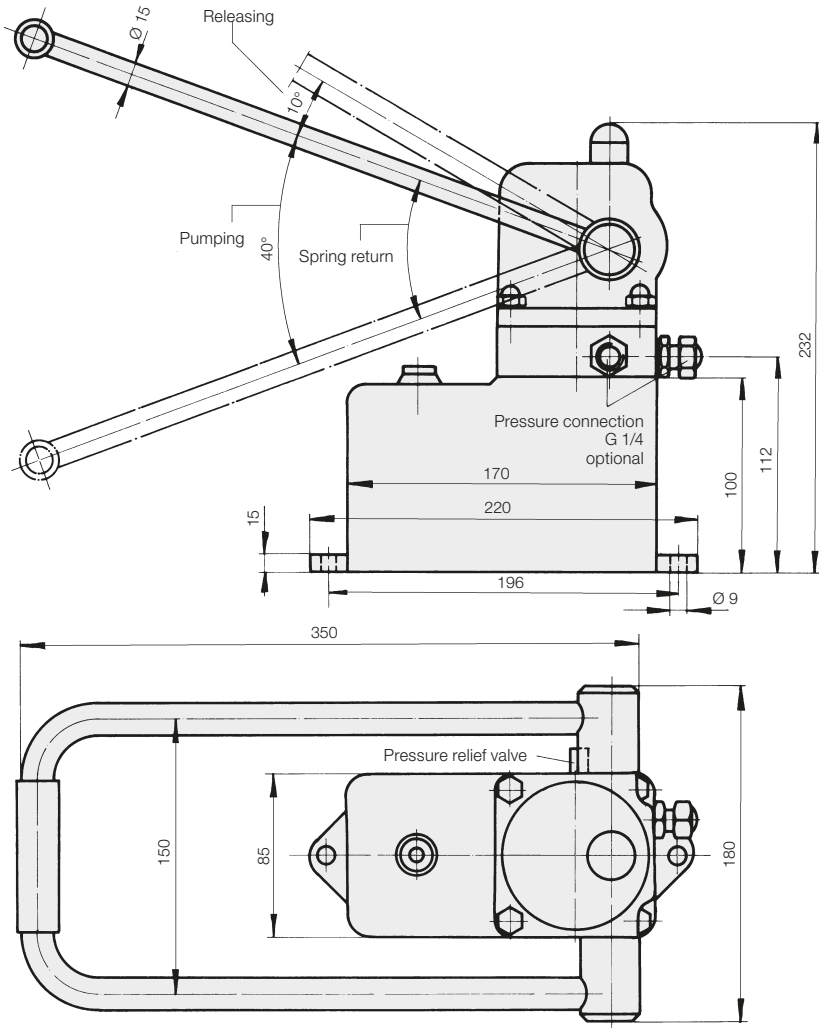
Displacement/stroke	up to 60 bar	[cm ³]	12	12	12
	up to 500 bar	[cm ³]	2,4	2,4	2,4
Usable oil volume		[cm ³]	1800	800	200
Range of adjustment, pressure relief valve		[bar]	50–500	50–500	50–500
Actuating force	up to 60 bar	[N]	216	216	216
	up to 500 bar	[N]	360	360	360
Weight, without oil		[kg]	10,5	11,5	9,8

Part no. 8817-000 8817-002 8817-003

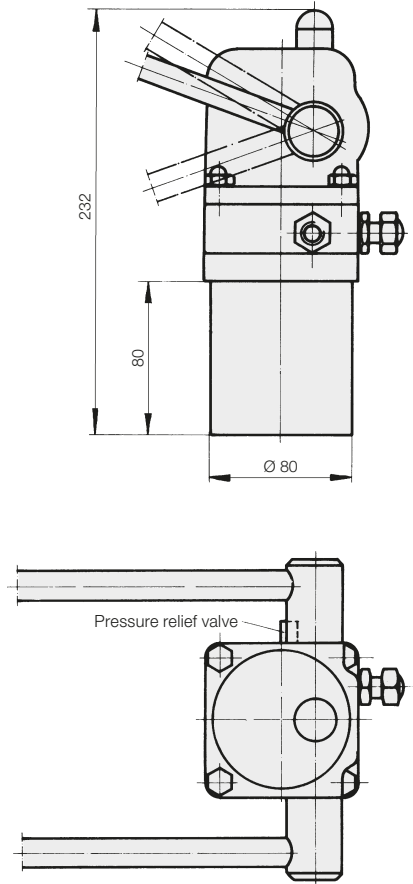
Dimensional drawings and accessories for part-no 8817-002 and 8817-003 see reverse page

Accessories

Two-stage pump, usable oil volume 800 cm³
Part no. 8817-002



Two-stage pump, usable oil volume 200 cm³
Part no. 8817-003

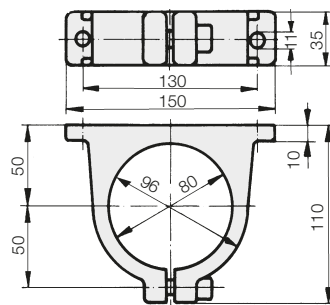


Accessories

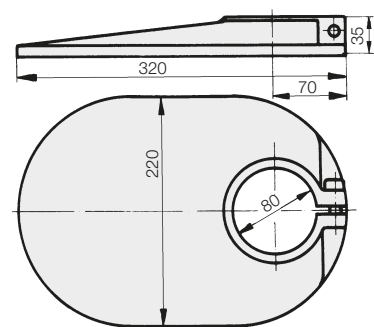
There are 3 different mounting possibilities for the pump 8817-003 (see photos and drawings)



Bracket (1.1 kg) Part no. 3533-002



Base (5.8 kg) Part no. 3533-001



Flange (1.2 kg) Part no. 3533-003

