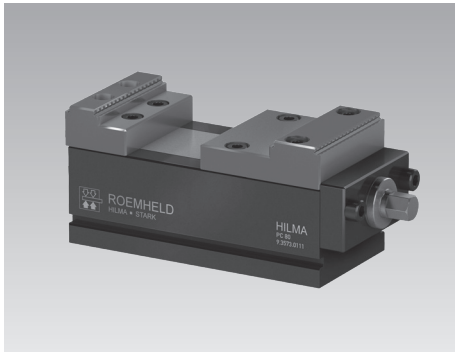




## Workholding Systems PC

clamping against the fixed jaw or concentric clamping, mechanically operated  
 jaw width 80 mm, clamping force 20 kN



Clamping system PC 80 – clamping against fixed jaw

### Advantages

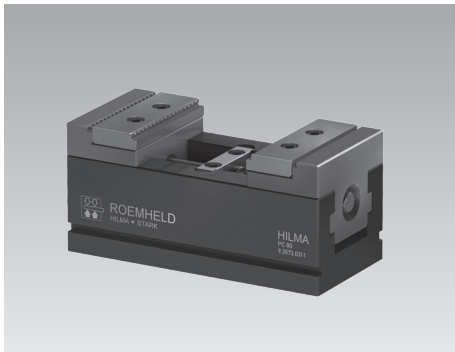
- Clamping against the fixed jaw or concentric clamping
- Compact design
- Simple low-cost clamping system
- Mounting holes as per customer's request are possible
- All steel design
- Standard design with step jaws
- Accessory top jaw
- Accessory adaptor plate
- Easy disassembly and cleaning

### Technical data

Clamping: **against fixed jaw or concentric clamping**  
 Operation: **mechanical** with torque wrench

### PC 80

Jaw width: 80 mm  
 Clamping force: 20 kN at 60 Nm  
 Clamping stroke: 50 mm (fixed jaw)  
 62 mm (concentric)  
 Length of the base: 170 mm  
 Height: 60 mm



Clamping system PC 80 Z – concentric clamping

### Description

PC clamping systems excel by a simple, compact design and a low price. They are particularly suitable for use in pallet magazines.

PC clamping systems in all-steel design are supplied with clamping jaws and offer high precision and process safety.

The clamping jaws equipped with grip texture offer a good retention force even with low clamping forces.

For mounting, the bottom sides of the PC clamping systems are provided with 4 tapped holes M8 in a grid of 52 mm as well as with a tapped hole M10 for the location of a STARK retractable nipple (see accessory).

At the side of the base there are clamping grooves for fixation with clamping claws.

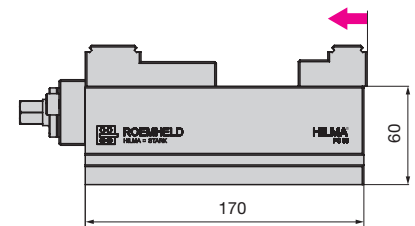
The simple design of the PC clamping systems allows easy disassembly and thus easy cleaning of the clamping systems.

### Versions

Two different designs are available that differ in their clamping type and clamping stroke and thus in the opening (see page 2).

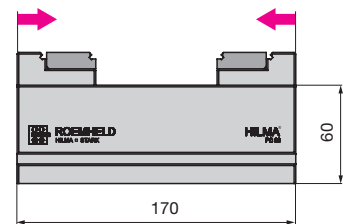
### PC 80

Clamping principle: clamping against the fixed jaw  
 Clamping stroke: 50 mm



### PC 80 Z

Clamping principle: concentric clamping  
 Clamping stroke: 62 mm



### Application

PC clamping systems are advantageously used for workpiece clamping of small and medium-sized batches.

As well as in automated systems where workpiece pallet storage units are used at the machine tool.

### Accessory

(see page 3 and 4)

- Clamping jaws
- Accessories for mounting, positioning and operation
- Adaptor plates
- Clamping claws
- STARK retractable nipple

### Accessory rapid change block Quintus 1

(see data sheet WS 5.6150)

- for mounting of the PC clamping systems on the machine table
- available with or without zero point clamping system

### Consultation

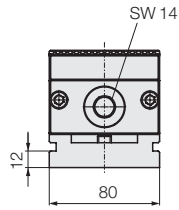
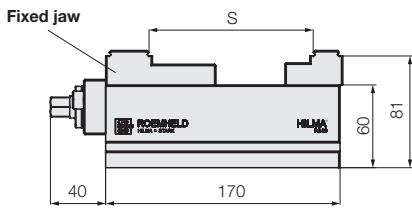
Our experts will be pleased to advise you also on site, and work with you to find the optimum clamping solution.

Extensive information such as drawings and CAD models are available on request.

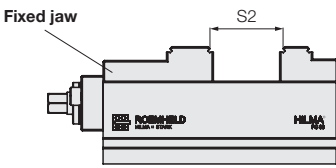
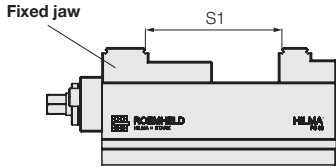
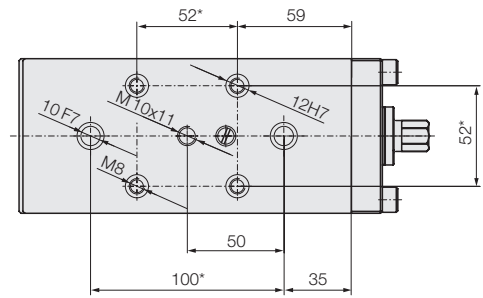
## Technical data Dimensions

### PC 80

#### Clamping against the fixed jaw

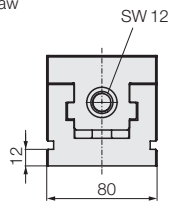
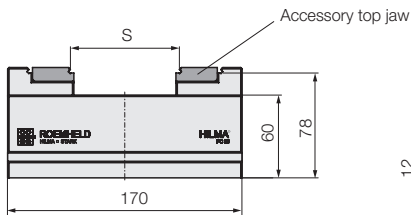


View from below

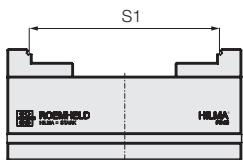
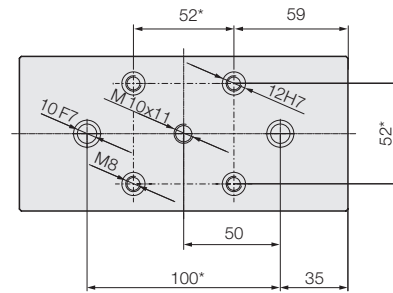


### PC 80 Z

#### Concentric clamping



View from below

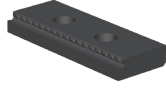
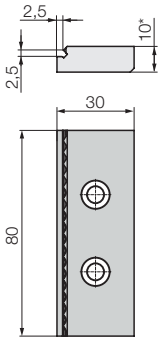


\* Tolerance  $\pm 0.01$  mm  
All dimensions in [mm]

Series		PC 80	PC 80 Z
Clamping principle		fixed jaw	concentric
Clamping force	[kN at 60 Nm]	20	20
S <sup>1)</sup>	[mm]	69–119	17–79
S1 <sup>1)</sup>	[mm]	51–99	75–139
S2 <sup>1)</sup>	[mm]	6–54	–
Weight with clamping jaws	[kg]	7	6
Part no. with clamping jaws		935730111	935730311

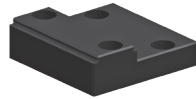
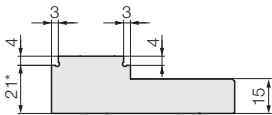
<sup>1)</sup> depending on the clamping jaw used, see accessory page 3

## Accessories Clamping jaws



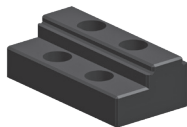
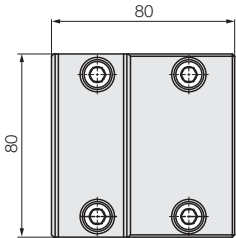
### Top jaws with grip

Type	Part no.	Clamping ranges		
		S	S1	S2
<b>PC 80 Z</b>	<b>530050371</b>	17-79	-	-



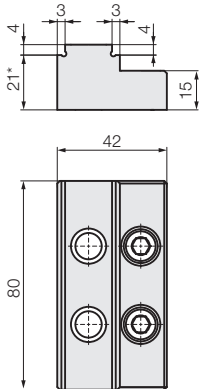
### Step jaws smooth, fix

Type	Part no.	Clamping ranges		
		S	S1	S2
<b>PC 80</b>	<b>935736901</b>	69-119	51-99	6-54



### Step jaws smooth, movable

Type	Part no.	Clamping ranges		
		S	S1	S2
<b>PC 80</b>	<b>935736902</b>	69-119	51-99	6-54



## Accessories for mounting, positioning and operation

### Application examples

#### Accessories for mounting, positioning and operation

##### Torque wrench



Type	Part no.	Torque [Nm]
PC 80	93583 7010	5–60

##### Socket for torque wrench



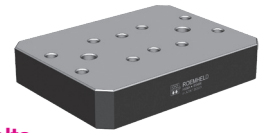
Type	Part no.	SW
PC 80	1 3124 0020	14
PC 80 Z	13124 0021	12

##### Allen wrench for clamping jaws and top jaws



Type	Part no.	SW
PC 80 Z	16911 0001	5
PC 80	16911 0002	6

##### Adaptor plate including screws and positioning bolts



Top side: 4 through holes in the grid of 52 mm  
 Bottom side: 4 tapped holes M8 in the grid of 96 mm  
 Top side prepared for the location of MC 60.

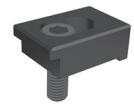
Type	Part no.	Dimensions [mm]
PC 80	93297 8093	170 x 130 x 32

##### Retractable nipple M10 for Quintus 1 Mounting at the clamping system



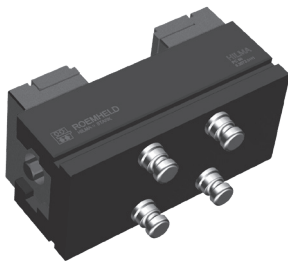
Type	Part no.	Quantity
PC 80	93920 0201	1 off

##### Clamping claws Set of 4 off including screws



Type	Part no.	Thread
PC 80	93583 7001	M10
	93583 7002	M12

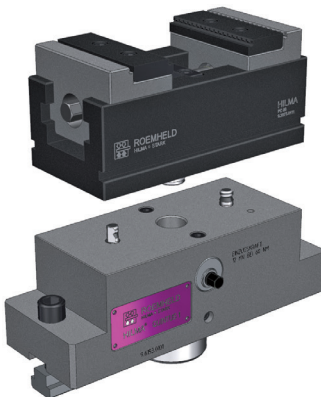
#### Application examples



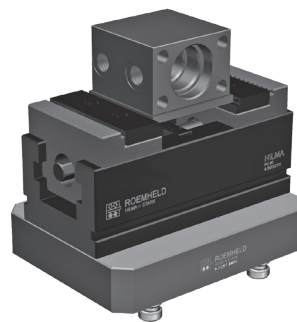
Clamping system PC 80 Z equipped with 4 off retractable nipples in the grid of 52 mm (compatible for use in LANG Quick Point 52).



Clamping system PC 80 Z on adaptor plate.



Clamping system PC 80 Z with retractable nipples suitable for the rapid change block Quintus 1 with STARK zero point clamping system SPEEDY metec.



Clamping system PC 80 Z on adaptor plate. Adaptor plate equipped with 4 off retractable nipples in the grid of 96 mm (compatible for use in LANG Quick Point 96).