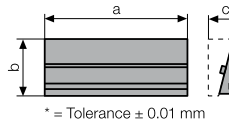


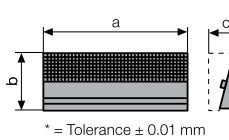
QIS base jaw with permanent magnets

Part no.	a	b	
9.3771.0201	100	34	
9.3771.0301	125	45	
9.3771.0401	160	54	



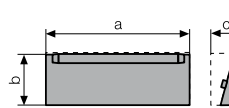
QIS interchangeable jaw, smooth

Part no.	a	b	c
8.3771.1201	100	34	21
8.3771.1301	125	45	26
8.3771.1401	160	54	31



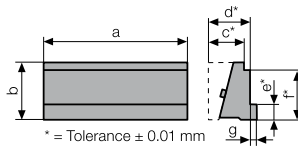
QIS interchangeable jaw, serrated

Part no.	a	b	c
8.3771.2201	100	34	21
8.3771.2301	125	45	26
8.3771.2401	160	54	31



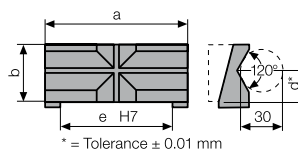
QIS interchangeable jaw, crowned

Part no.	a	b	c
8.3771.3211	100	32,5	23,0
8.3771.3311	125	43,0	27,3
8.3771.3411	160	51,0	31,9



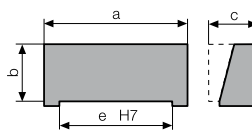
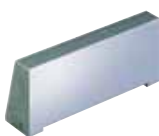
QIS interchangeable jaw, stepped

Part no.	a	b	c	d	e	f	g
8.3771.4201	100	34	21	25	10	29	4
8.3771.4301	125	45	26	30	13	39	5
8.3771.4401	160	54	31	35	15	45	5



QIS interchangeable jaw, prismatic

Part no.	Ø up to	a	b	c	d	e	f
8.3771.5201	8 – 35	100	34	53	19	78	28,0
8.3771.5301	10 – 50	125	45	58	27	98	34,2
8.3771.5401	12 – 60	160	54	60	32	125	37,0



QIS interchangeable jaw, soft

Part no.	a	b	c	e
8.3771.7201	100	34	30,0	78
8.3771.7301	125	45	36,5	98
8.3771.7401	160	54	47,0	125

Mount magnetic base jaw



Parallel approach of the QIS jaw and insertion guided by a locating pin



Jaw change in a few seconds:

Push up the QIS jaw to the end of the slot and tilt

