



**Adaptor Plates**  
for *modulog* interfaces

**Adaptor plate DMH 140**



**Advantages**

- *modulog* interface
- Simple vertical mounting of the rotating module - horizontal axis DMH
- Easy mounting
- Standard plate

**Application**

The adaptor plate DMH 140 allows vertical mounting of the rotating module - horizontal axis DMH 200 on modules with a modulog interface 140 x 140.

**Material**

steel, black oxide

**Note**

The fixing screws M10 are not included in our delivery.

**modulog**

**Adaptor plate**

for rotating modules DMH 200

**Part no. 6311-326**



**modulog interface**

- 140 x 140 mm – M10

**Mounting scheme - example**



Rotating module - horizontal axis DMH with interface  
**95 x 50 mm – M10**

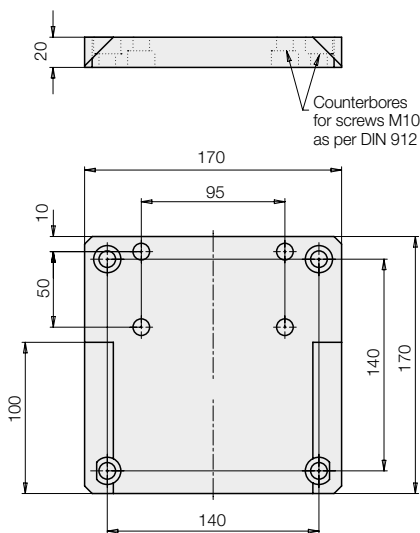


Adaptor plate **DMH 140**



Lifting module with top plate interface  
**140 x 140 – Ø 10.5 mm**

**Dimensions**



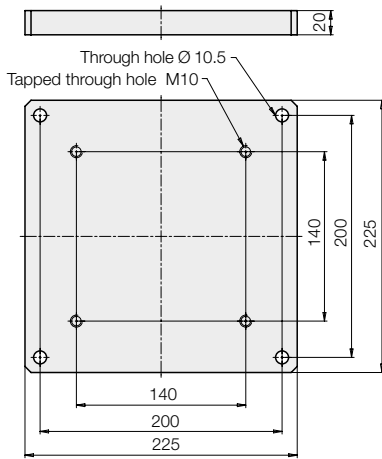
**Application example**



Rotating module - horizontal axis DMH 200 vertically mounted on a lifting module Shop-Floor

## Adaptor Plates

### Adaptor plate 140 – 200



#### Advantages

- Simple mounting of *modulog* modules with different interfaces
- Easy mounting
- Standard plate

#### Application

By means of the adaptor plate 140 – 200 modules with a 140 x 140 mm *modulog* interface can be mounted onto a 200 x 200 mm *modulog* interface.

For example a rotating module - vertical axis on a cart or floor module.

#### Material

steel, black oxide

#### Note

The fixing screws M10 are not included in our delivery.

### *modulog*

#### Adaptor plate

Interface 140 to 200

Part no. 6311-417



#### *modulog* interface

- 140 x 140 mm – M10
- 200 x 200 mm – Ø 10.5 mm

#### Mounting scheme - example



Rotating module - vertical axis DMV with interface  
**140 x 140 mm – M10.5**

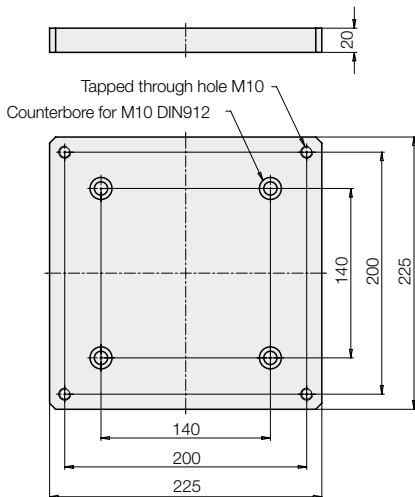


Adaptor plate **140 – 200**



Cart module WMS with interface  
**200 x 200 – M10**

### Adaptor plate 200 – 140



#### Advantages

- Simple mounting of *modulog* modules with different interfaces
- Easy mounting
- Standard plate

#### Application

By means of the adaptor plate 200 – 140 modules with a 200 x 200 mm *modulog* interface can be mounted onto a 140 x 140 mm *modulog* interface.

For example a lifting module on a rotating module - vertical axis.

#### Material

steel, black oxide

#### Note

The fixing screws M10 are not included in our delivery.

### *modulog*

#### Adaptor plate

Interface 200 to 140

Part no. 6311-423



#### *modulog* interface

- 200 x 200 mm – M10
- 140 x 140 mm – Ø 10.5 mm

#### Mounting scheme - example



Lifting module with base plate interface  
**200 x 200 mm – Ø 10.5**

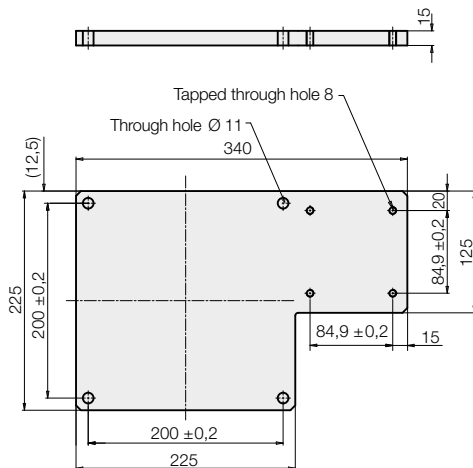


Adaptor plate **200 – 140**



Rotating module - vertical axis DMV with interface  
**140 x 50 mm – M10**

### Adaptor plate 6312-748



#### Advantages

- Easy installation of indexing with foot pedal
- Easy mounting
- Standard plate

#### Application

The indexing mechanism of the rotating modules can be fixed on the floor with the adaptor plate 6312-748. With the adaptor plate, all foot pedals for rotating and tilting modules such as per data sheet M 1.101 can be quickly and safely fixed.

The application is optimised for cart modules below the base plate of lifting modules.

#### Material

aluminium, black anodised

#### Note

The fixing screws M8 are not included in our delivery.

### *modulog*

#### Adaptor plate

Pedal-operated indexing

Part no. 6312-748



#### *modulog* interface

- 200 x 200 mm – Ø 10.5 mm