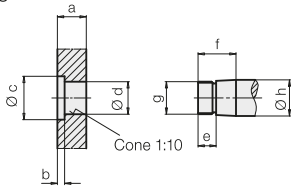


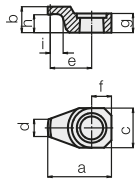
Accessories

Dimensions for special clamping arms



Swing clamp	a	b	∅c	∅d ^{+0,10 +0,05}	e	f	g	∅h ₁₇
18X3-XXX	16	4	24	19,8	10	21	M 18x1,5	20
18X5-XXX	23	5	34	31,8	12	28	M 28x1,5	32
18X6-XXX	28	5	46	39,8	12	34	M 35x1,5	40
18X7-XXX	34	6	56	49,8	13	40	M 45x1,5	50

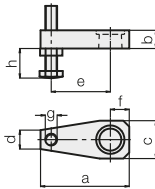
Clamping arm, max. 300 bar



Swing clamp	a	b	c	d	e	f	g	h	i	Weight [kg]	Part no.
18X3-XXX	51,5	21	32	14	33,5	16	15,5	14,5	7	0,11	3548-238
18X5-XXX	76	28	46	25	50	23	22,5	19	7	0,3	3548-236
18X6-XXX	100	34	66	39	64	33	28	23	7	0,84	3548-301
18X7-XXX	123	40	75	39	82,5	37,5	34	27	8	1,3	3548-302

Material: 42CrMo4

Clamping arm assembly, complete, max. 200 bar

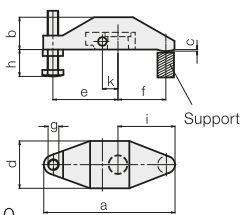


Swing clamp	a	b	c	d	e	f	g	h max.	h min.	Weight [kg]	Part no.
18X3-XXX	75	16	32	16	50	16	M10	64	6	0,2	0354-001
18X5-XXX	115	23	48	22	75	25	M16	79	9	0,7	0354-003
18X6-XXX	140	28	60	28	95	30	M16	79	9	2,0	0354-042
18X7-XXX	178	34	78	40	120	40	M20	98	12	2,55	0354-005

Swing clamp	a	b	c	d	f	Weight [kg]	Part no.
18X3-XXX	75	16	32	16	16	0,18	3921-016
18X5-XXX	115	23	48	22	25	0,65	3921-017
18X6-XXX	140	28	60	28	30	1,85	3921-021
18X7-XXX	178	34	78	40	40	2,3	3921-018

Material: 42CrMo4

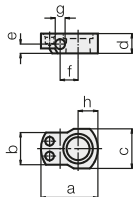
Clamping strap assembly, complete, with carrier, max. 500 bar



Swing clamp	a	b	c	d	e	f	g	h max.	h min.	i	k	Weight [kg]	Part no.
18X3-XXX	122	30	1,5	44	60	45	M10	64	6	53	14,5	0,57	0354-000
18X5-XXX	185	45	2	58,5	83	75	M16	79	9	87	21	1,58	0354-002
18X6-XXX	203	54	2,5	82	92	82	M16	79	9	95	28	3,45	0354-041
18X7-XXX	223	59	2,5	98	100	90	M20	98	12	105	33	4,75	0354-004

Material: GGG-40

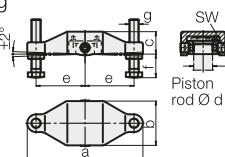
Carrier for special clamping strap



Swing clamp	a	b	c	d	e	f	g ^{H7}	h	Weight [kg]	Part no.
18X3-XXX	46	26	32	16	7,5	14,5	8	16	0,08	3542-093
18X5-XXX	59	32	40	23	13	21	10	22	0,16	3542-094
18X6-XXX	82	44,5	58	28	17	28	12	34	0,5	3542-132
18X7-XXX	90	56	68	34	21	33	14	36	0,65	3542-096

Material: 42CrMo4

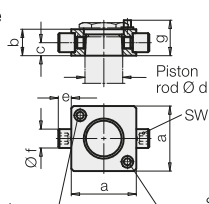
Double clamping arm assembly, complete, with carrier, max. 500 bar



Swing clamp	a	b	c	∅d	e	f min.	f max.	g	SW	Weight [kg]	Part no.
18X3-XXX	138	59	28,5	20	60	10	64	M 10	5	0,83	0354-131
18X5-XXX	196	75	38	32	83	15	79	M 16	8	2,11	0354-132
18X6-XXX	216	85	47	40	92	15	79	M 16	8	3,17	0354-133
18X7-XXX	236	105	56	50	100	19	98	M 20	8	5,24	0354-134

Material: GGG-40

Carrier, complete with threaded bolt and spring clamping elements



Swing clamp	a±0,1	b	c	∅d	e	∅f ^{g6}	g*	SW	Part no.
18X3-XXX	43	16	7,5	20	9	10	21,5	5	0354-141
18X5-XXX	55	23	11	32	11	16	29	8	0354-142
18X6-XXX	63	28	15	40	12	18	35	8	0354-143
18X7-XXX	77	34	17	50	15	20	41	8	0354-144

* Stop surface for spring elements

Material: 42CrMo4